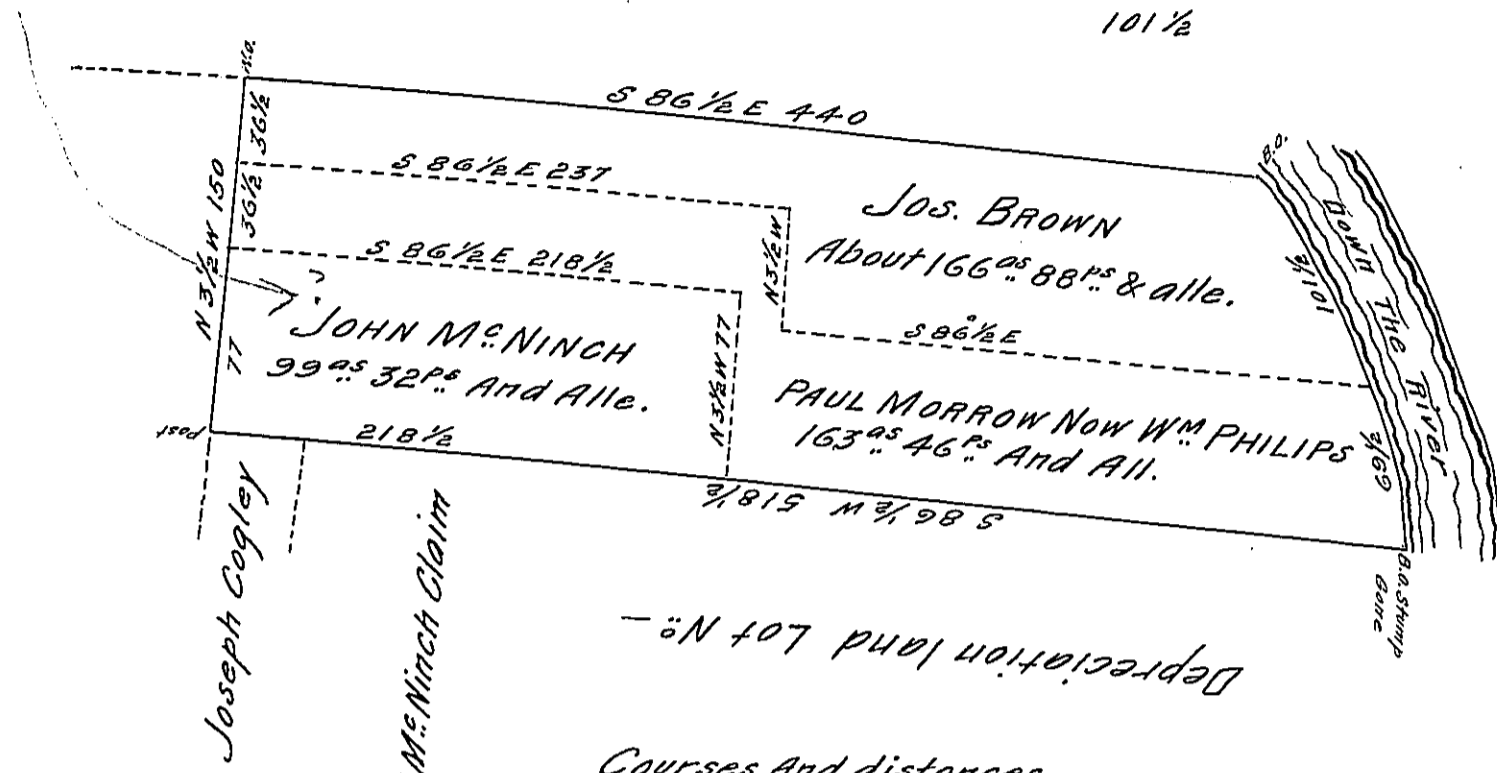


Courses and Distances
 Down the River on Jo:
 Browns part
 S37E 96
 S26E 5 1/2 Perches
 101 1/2

6-146-63

John Cunningham



Depreciation land Lot No. -

Courses And distances
 Down the River
 S37E 96
 S26E 30
 S22E 45
 171

The above Draught is that of a tract of land situate in Buffaloe town-
 ship Armstrong County Adjoining the Allegany River lands of John Cuning-
 ham And others Containing four hundred and twenty Nine Acres fifty
 Nine perches and the allowance of six p. Cent which appears by the
 Survey Books in this office to have been first Surveyed to James Sloan
 Esqir. By Virtue of his Actual Settlement and improvement thereon
 on the 15th day of November 1803 And some time in the same year--
 the remainder exclusive of that of John Mc Ninch as Represented in
 the diagram) was Surveyed to John Scott by Warrant of Jan. 22^d 1794--
 But John Mc Ninch the first settler (as early as the year 1796) Considers
 himself injured by the above represented divisions And ^{for} other Causes
 enters a Caveat to granting a patten for the above described tract
 of land contrary to his consent thereto.

Gabriel Hiester Esquire S.G.

Robert Richards D.S.
 Kittanning Oct. 18th 1825

IN TESTIMONY that the above is a copy of the original remaining on file in
 the Department of Internal Affairs of Pennsylvania, made
 conformably to an Act of Assembly approved the 16th day of
 February, 1833, I have hereunto set my Hand and caused
 the Seal of said Department to be affixed at Harrisburg,
 this seventh day of April 1906

Loach Brown
 Secretary of Internal Affairs.